

DryRod® II Portable Electrode Ovens

(All operate on 50-60Hz)

Type 1

- Dual voltage heating element operates between 100-240V while providing consistent oven temperature
- Removable cord secured to oven by locking power inlet allows for easy replacement if damaged
- Insulated lid easily secures with a latch

Type 2

- Dual voltage heating element operates between 100-240V while providing consistent oven temperature
- Steady state operation reduces power consumption
- External adjustable thermostat included
- Power indicator light included
- Removable cord secured to oven by locking power inlet allows for easy replacement if damaged

Type 5

- Wire wrapped heating elements provide consistent oven temperature
- Removable cord secured to oven by locking power inlet allows for easy replacement if damaged
- Carry handles or wheels and pull handle available
- External adjustable thermostat included

Type 1



Type 5 with handles



Type 5 with wheels



Type 2

Digital Thermometer Kit

For Type 2, 5 and 15B Ovens

Displays temperature in Celsius or Fahrenheit
PART #1257420



Type 200HT



Type 900HT



Type 300HT



Type 40HT

Stationary Electrode Ovens

(All operate on 50-60Hz)

Type 15B

- External adjustable thermostat comes standard
- Optional digital thermometer available

Type 200HT, 300HT and Type 900HT

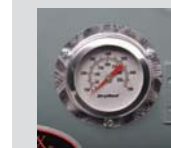
- High temperature allows for holding and baking of electrodes
- Door mounted thermometer offered for instant temperature indication
- External adjustable thermostat comes standard
- Single action door latch easily closes and can be locked

Type 40HT

- Variable high temperature allows for rebaking and reconditioning of electrodes
- Programmable controller with digital temperature display allows for customized temperature profiles
- Rugged steel construction provides durability in the field

Replacement Thermometer

For Type 200HT, 300HT and 900HT Ovens



- Mounts in door of oven
- Certified accurate to +/-5°C
- Includes calibration certificate

PART #7504001

DESCRIPTION	PART #	CAPACITY	TEMPERATURE RANGE
Type 1 100-240V AC/DC @ 60 watts with indicator light	1205500	5 kg (10 lb)	Preset to 149°C (300°F)
Type 2 100-240V AC/DC @ 70 watts with digital thermometer	1205510	9 kg (20 lb)	38° - 149°C (100° - 300°F)
Type 2 100-240V AC/DC @ 70 watts	1205512	9 kg (20 lb)	38° - 149°C (100° - 300°F)
Type 5 120/240V AC @ 300 watts with digital thermometer	1205521	25 kg (50 lb)	38° - 149°C (100° - 300°F)
Type 5 120/240V AC @ 300 watts	1205523	25 kg (50 lb)	38° - 149°C (100° - 300°F)
Portable Ovens With Wheels			
Type 5 120/240V AC @ 300 watts with digital thermometer	1205520	25 kg (50 lb)	38° - 149°C (100° - 300°F)
Type 5 120/240V AC @ 300 watts	1205522	25 kg (50 lb)	38° - 149°C (100° - 300°F)

DESCRIPTION	PART #	CAPACITY	TEMPERATURE RANGE
Type 15B 120/240V AC @ 600 watts with digital thermometer	1205531	70 kg (150 lb)	38° - 149°C (100° - 300°F)
Type 15B 120/240V AC @ 600 watts	1205533	70 kg (150 lb)	38° - 149°C (100° - 300°F)
Type 200HT 120/240V AC @ 1000 watts with door mounted thermometer	1200461	90 kg (200 lb)	38° - 288°C (100° - 550°F)
Type 300HT 120/240V @ 1500 watts	1200160	181 kg (400 lb)	38° - 350°C (100° - 660°F)
Type 300HT 120/240V @ 1500 watts with door mounted thermometer	1200161	181 kg (400 lb)	38° - 350°C (100° - 660°F)
Type 40HT 3/50/60/480V AC @ 4500 watts	1204400	181 kg (400 lb)	38° - 427°C (100° - 800°F)
Type 40HT 1/50/60/240V AC @ 4500 watts	1204402	181 kg (400 lb)	38° - 427°C (100° - 800°F)
Type 900HT 240/480V AC @ 4000 watts	1200360	500 kg (1100 lb)	38° - 350°C (100° - 660°F)
Type 900HT 240/480V AC @ 4000 watts with door mounted thermometer	1200361	500 kg (1100 lb)	38° - 350°C (100° - 660°F)

Calibration certificate provided with all ovens and thermometers