

**THERMACUT**<sup>®</sup>  
THE CUTTING COMPANY<sup>™</sup>

PLASMA CUTTING SYSTEM

# EX-TRAFIRE<sup>®</sup> 105HD



CUTTING MAX.  
2 1/4"   
DUTY CYCLE  
100% @ 94 A  
INCL.  
MARKING

[WWW.THERMACUT.COM](http://WWW.THERMACUT.COM)

# INDUSTRIAL CUTTING. HEAVY-DUTY PERFORMANCE.

The plasma cutting systems in the **EX-TRAFIRE® HD** range are the absolute specialists in meeting tough demands in continuous operation. The mobile **EX-TRAFIRE® 105HD** plasma cutting system with 100% duty cycle is the perfect solution for demanding heavy duty applications in industry.



Heavy  
Fabrication



Structural



Shipyards  
and Offshore



Automotive and  
Transportation



Steel Mills and Steel  
Service Center





# EX-TRAFIRE® 105HD PLASMA CUTTING SYSTEM

## IMPRESSIVE PERFORMANCE



- + Extremely high cutting speed
- + Maximum cutting quality, even with long cuts
- + Also ideal for automated processes

## HIGHEST FLEXIBILITY



- + Plate thicknesses up to 2 1/4 " and more
- + For mechanized and manual applications
- + Gouging with high removal rate
- + Suitable for worldwide use

## SIMPLE OPERATION



- + Large 4" LCD color display
- + Clear control panel
- + Self-explanatory icons
- + TCS for quick torch replacement

## OPTIMAL COST-EFFECTIVENESS



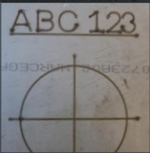
- + Low investment costs
- + 20% longer consumable lifetime
- + Low operating costs
- + 100% duty cycle for maximum productivity

## NEW CUTTING TORCH FHT®EX105TT



- + Torch design award winner
- + Optimized ergonomics
- + Relaxed PE and PA cutting
- + 100% duty cycle

## MARKING



- + Automatic gas identification (air, nitrogen, argon)
- + Integrated gas-saving function
- + Fine, deep or wide markings
- + Optional Smooth-Marking for applications below 20 A marking current

## READY FOR INDUSTRY 4.0



- + Industry leading connectivity
- + CAN, RS 485 and RS 422 interfaces (optional)
- + Easy monitoring
- + Expandable and updatable

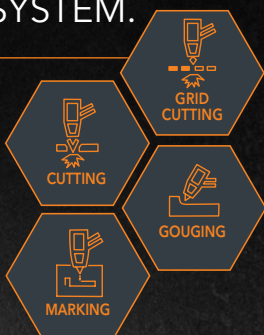
## AUTOMATIC SETTINGS



- + Cutting gas media, electricity and pilot current
- + Compensation for pressure drops
- + Fewer operating errors, better cutting quality

# EX-TRAFIRE® 105HD

## PLASMA CUTTING SYSTEM.



### SPECIFICATION

Severance	2 1/4 "
Recommended	1 1/2 "
Piercing	3/4"
Gouging removal	20 lbs/hr

### DUTY CYCLE (104 °F)

100%	@ 94 A
------	--------

### OUTPUT (VDC)

Nominal [V]	160
-------------	-----

### INPUT

Voltage	1x200-240/3x208-575+/- 15%
Air flow cut pressure	70 PSI
Frequency	50/60 Hz
Recommended min/max pressure	90-145 PSI

### MACHINE DATA

Dimensions LxHxW	24"x20"x11.75"
Weight	96 lbs

### TORCH (HAND/MACHINE)

FHT-EX®105TTH
FHT-EX®105TTM

Designed to interface with a variety of CNC machines

# THINK FRESH. CUT ORANGE.

THERMACUT® comes up with fresh ideas for cutting technology. Benefit from innovative, reliable, powerful and highly efficient cutting solutions.



Discover the other plasma cutting systems within the **EX-TRAFIRE® HD** family and our wide range of cutting solutions at [www.thermacut.com](http://www.thermacut.com)

[WWW.THERMACUT.COM](http://WWW.THERMACUT.COM)  
[SALES@THERMACUT.COM](mailto:SALES@THERMACUT.COM)

follow  
**#EXTRAFIRE**



THERMACUT®, THE CUTTING COMPANY®, FHT-EX®, EX-TRAFIRE®, EX-TRACK®, EX-TRABEAM® AND EX-TRAFIAME® ARE REGISTERED TRADEMARKS OF THERMACUT, K.S. AND MAY BE REGISTERED IN CZECH REPUBLIC AND/OR OTHER COUNTRIES. ALL OTHER TRADEMARKS ARE PROPERTIES OF THEIR RESPECTIVE OWNERS.